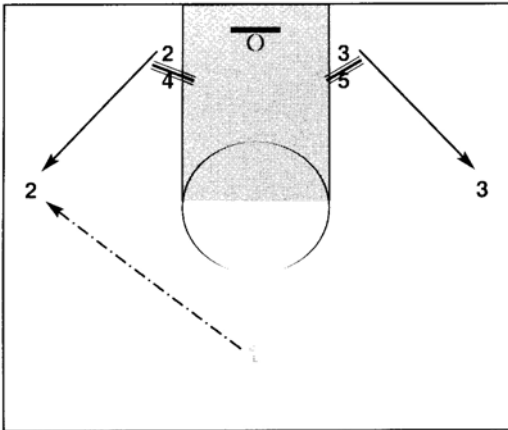


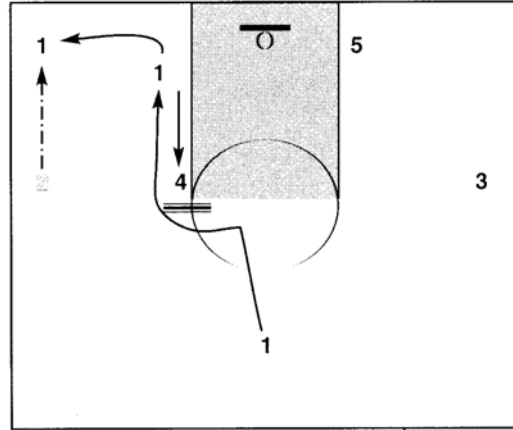
(Man-to-Man) OFFENSIVE PLAY: M.D. (More Dunks)



NOTES:

FRAME 1

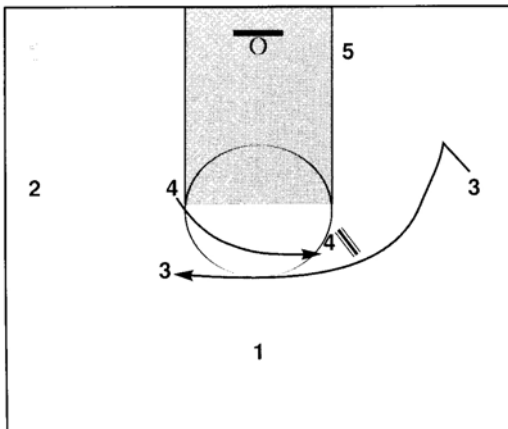
Offense starts out of a double stack and both 4 and 5 set picks for 2 and 3 to pop out to the wings open for a pass from 1. The play goes to the left side with a pass to 2.



NOTES:

FRAME 2

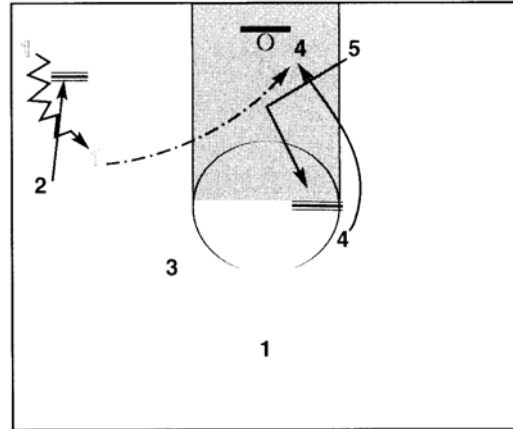
4 flashes to the elbow and 1 misdirects and v-cuts off of 4's pick. If 1 is wide open on the give-and-go, then obviously the 2 passes to 1 for the easy lay-up. The play is designed for 1 to pop out to the corner and receive the pass from 2 in the corner. 5 stays on the low post.



NOTES:

FRAME 3

4 rolls away from the ball and floats above the opposite elbow while 3 takes his man toward the baseline then comes up high above the foul line off of 4's pick to the basketball. 5 stays on the low block and waits for 2's key to make his next move.



NOTES:

FRAME 4

4 must square up as 3 goes by him to see and feel the timing for the play. When 5 misdirects coming toward the ball, then by v-cutting back to the ball will make him open for the lob. 1 must receive the pass and square up into a triple threat position. A jab step to the baseline will help set up 2's pick. 2 will come down and follow his pass to 1 and set a pick for 1. 1 will dribble off of 2's pick and 4 will be coming off 5's pick wide open just after 1 gets by 2's pick. 1 will lob to 4 for the dunk or lay up.