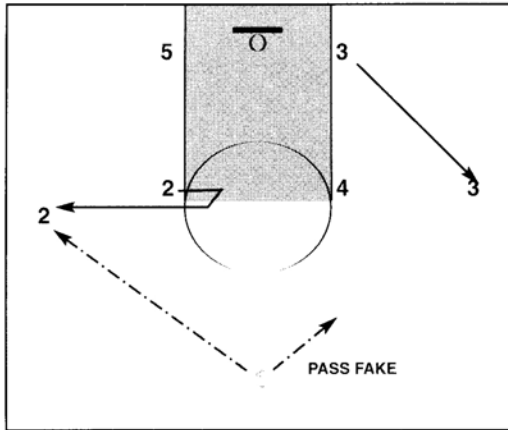


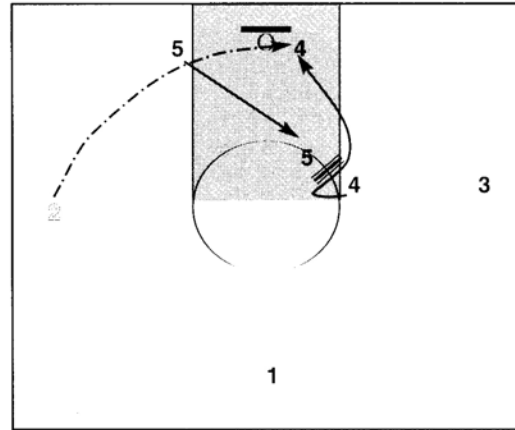
(Man-to-Man) OFFENSIVE PLAY: PPJ (PASS-PASS-JAM)



NOTES:

FRAME 1

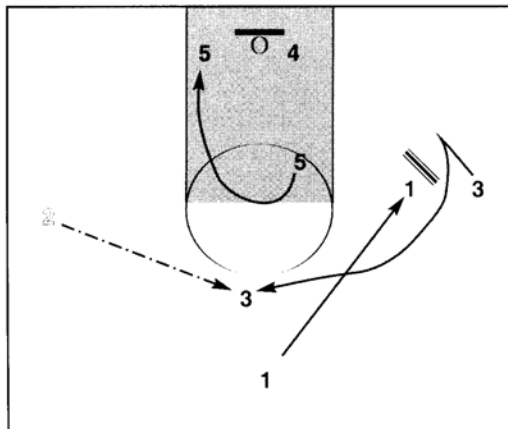
Offense starts in a box. This play requires exceptional timing. With good timing, 'PPJ' is tough to stop. 1 starts at the top waiting for both 3 (1st) and then 2 (2nd) to break to the wings. It is critical for 3 and 2 to get themselves open, because no pick will be set for either. 1 will pass fake to 3. That is the key for both 2 and 5. 2 breaks on the fake and must get himself open.



NOTES:

FRAME 2

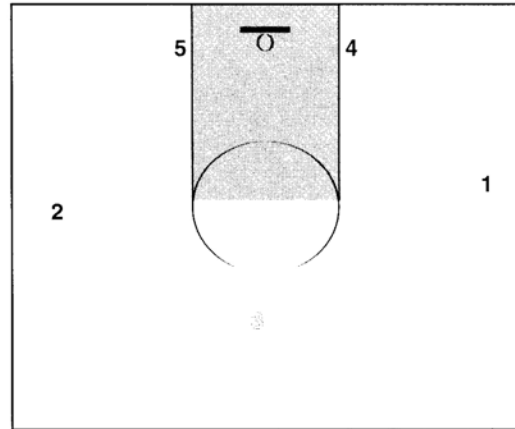
5 delays about a half second then flashes hard to the opposite elbow for a back pick for 4 as the ball is on its way from 1 to 2. The pick should be set as 2 is catching the ball. 2 can't waste any time because he catches the ball then throws a good lob to 4 wide open. 2 must square as he is catching the ball, so that the pass can be both quick and on the money.



NOTES:

FRAME 3

1. after passing, sets a pick for 3 and 3 flashes to the top of the key for a jumper if the lob is denied. 5 after setting a clean, solid pick then rolls to the side where he came from for any miss of 4's, or rebounding position from a perimeter shot from 3 (option #2).



NOTES:

FRAME 4

Notice how the floor is spaced if no lob is open. 4 and 5 assume the low post, 3 has the point, 1 and 2 take the wings and you can easily get into a regular motion offense.