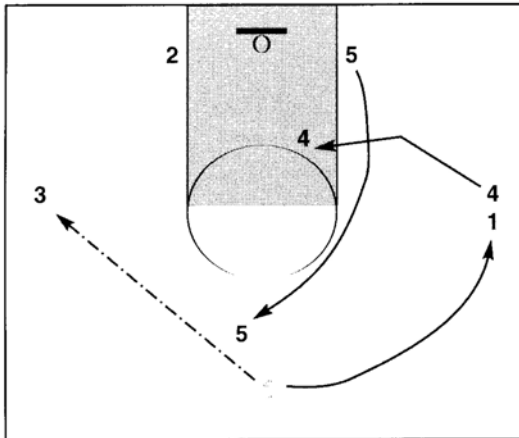


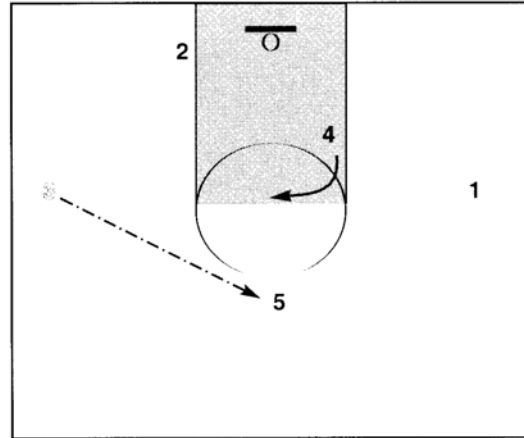
(vs. Zone) OFFENSIVE PLAY: ROE-ROB



NOTES:

FRAME 1

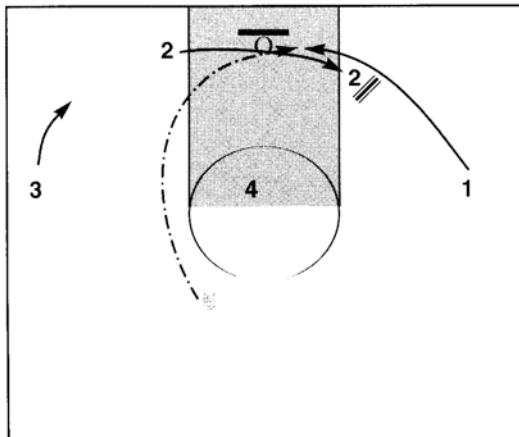
1 passes to 3 on the wing. 1 then roams the arc to the weak side wing. 5 flashes through the zone to the top of the key high enough to get ball reversal from 3 while 4 slides into the middle/high post.



NOTES:

FRAME 2

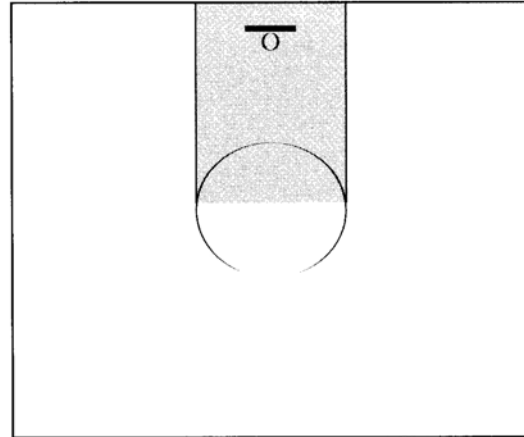
3 passes to 5. 5 must square up to the basket. 4 seals in the middle post asking for the pass from 5. This is a decoy to bring the weak side low man in the zone up to be accountable for 4. 4 then will roam in the paint high to occupy the strong side low post defenders in the zone.



NOTES:

FRAME 3

2 crosses over to the middle post below 4 to set up for a back pick for 1. 2 sets a pick on the man closest to the responsibility of the opposite block. It could be the defender who pick up 4 in the mid post initially. 1 comes off 2's pick along the base line. 5 will give him a lob up by the rim for a lay up. 3 will pass to 5 then float down to the corner to even more extend the defense to the strong side of the court.



NOTES:

FRAME 4

This play should be ran first early in the game to set up PSYCHE - the double lob slam play vs. a zone.