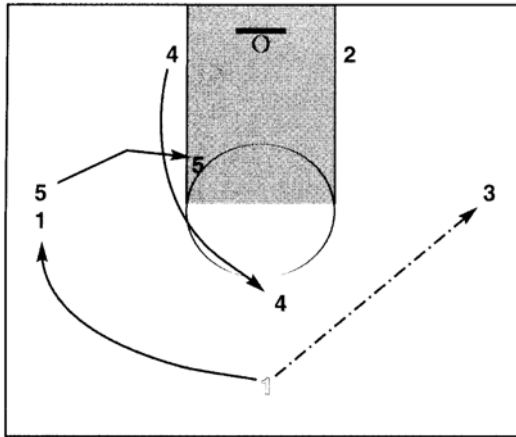


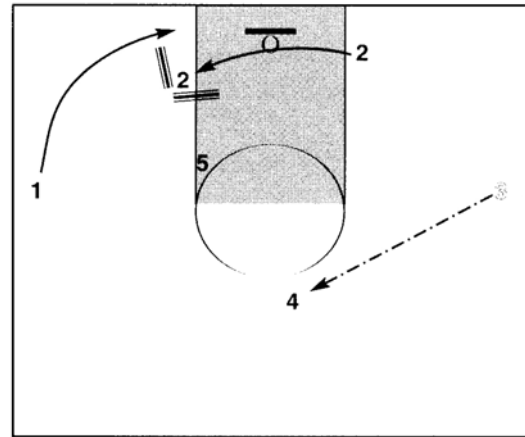
(vs. Zone) OFFENSIVE PLAY: PSYCHE



NOTES:

FRAME 1

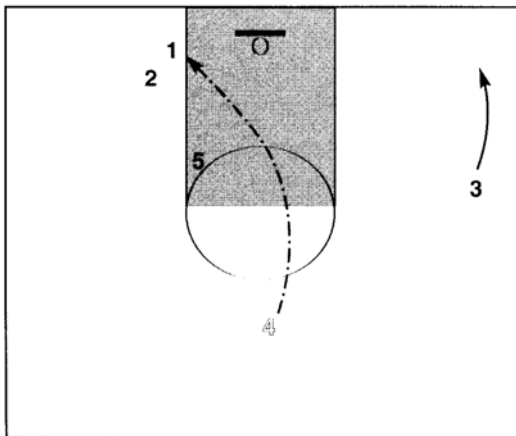
1 passes to 3 on the wing . 1 then roams the arc to the weak side wing. 4 flashes through the zone to the top of the key high enough to get ball reversal from 3 while 5 slides into the middle high post. 5 is one pass away when 4 receives pass from 3.



NOTES:

FRAME 2

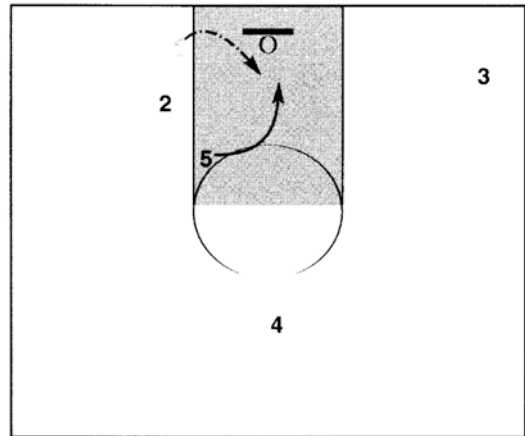
3 passes to 4. 4 must square up to the basket. 5 seals in the middle/high post asking for the pass from 4. This is a decoy to bring the weak side low man in the zone up to be accountable for 5. 5 then stays in the high post until the lob to 1 is made. 2 crosses along baseline to find weak side bottom man to pick.



NOTES:

FRAME 3

2 sets a pick on the man closest to the responsibility of the opposite block. It may be the man initially defending 5? 1 comes off of the base line pick, 4 will give him a lob up by the side of the bank board. 3 will rotate to the corner - or - 3 can rotate back up to the top to protect against the break.



NOTES:

FRAME 4

The defense at the bottom of the zone will converge to 1 and actually elevate late to contest 1's catch and shot. 1 will catch and lob over the defenders to 5 who rolls directly in front of the basket. When the defense reacts to the first lob, the middle of the key will separate like the Red Sea leaving 5 wide open for an oop-dunk. "PSYCHE"!