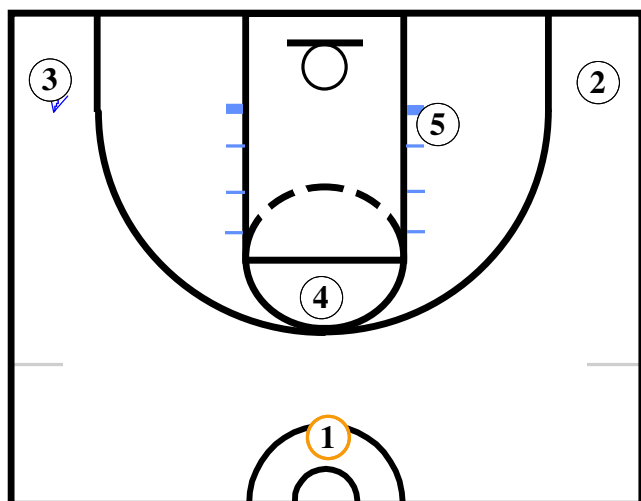


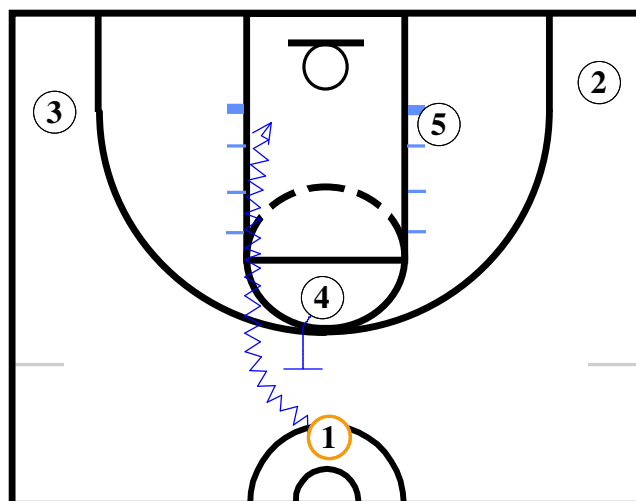
Ball Screen 4 High

11-24-2006



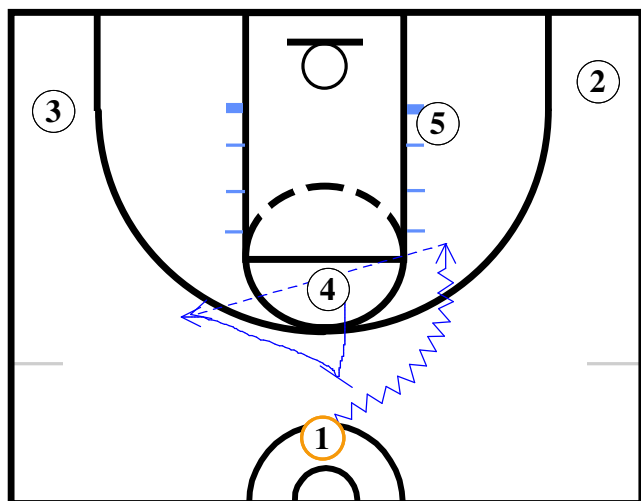
Frame A

High Low Alignment: 5 can line up at either block, 2 and 3 need to spot up and be ready to shoot. 1 can drive off of either side of 4.



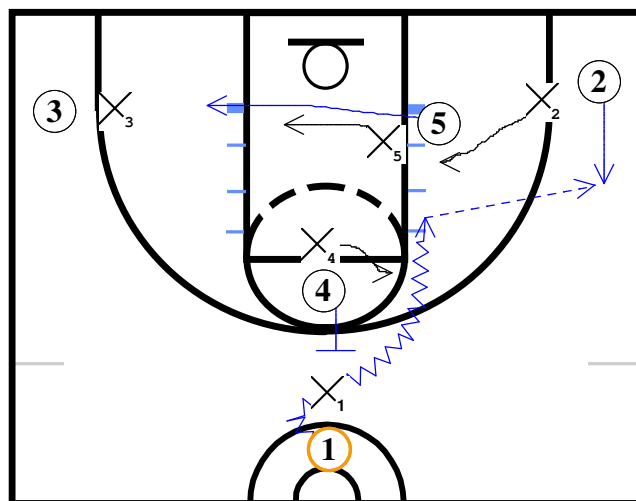
Frame B

Here 1 drives off of 4 for a layup. If they switch and X4 takes 1, usually he is not quick enough to stay with 1.



Frame C

Here 1 drives to his right and he passes to 4 on a pick and pop situation. If 1 cannot pass to 4, 4 can re-ball screen for 1.



Frame D

In this frame X4 and X1 switch on the drive by 1, but 1 beats X4 and X2 has to help, 1 can pass to 2 for a three point shot. 4 can roll to the basket.

General Comments

This set is really hard to guard. 5 can move to the opposite block that 1 is driving toward. 4 can pick and roll or pick and pop. If the coaches signals 4 that means the 4 man is up high to set the ball screen.