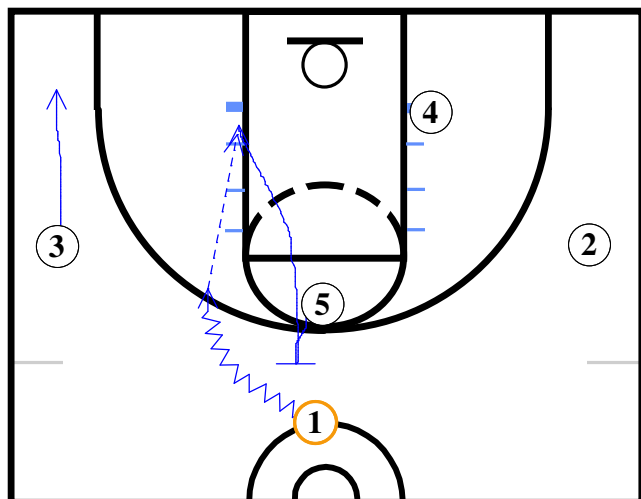


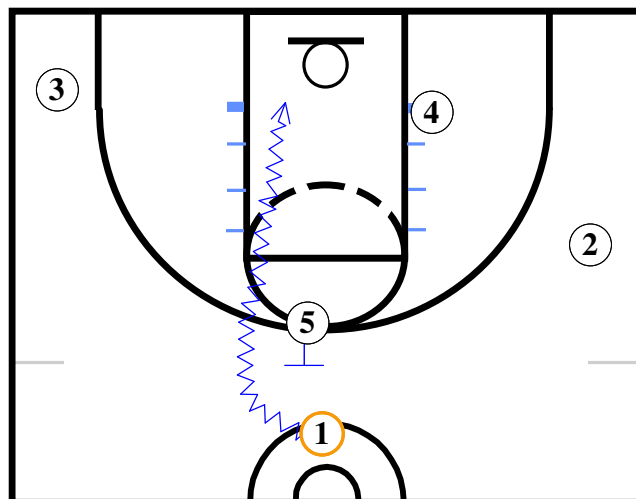
Ball Screen 5 High

12-26-2006



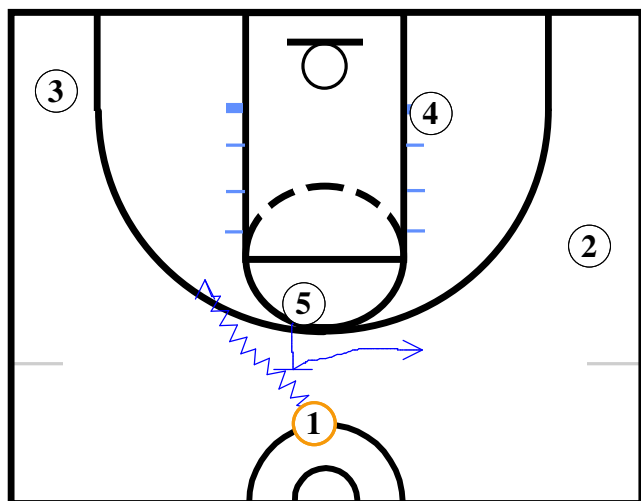
Frame A

5 ball screens for 1 and rolls to the basket and gets a pass from 1 for a layup. 3 spots up for a three point shot.



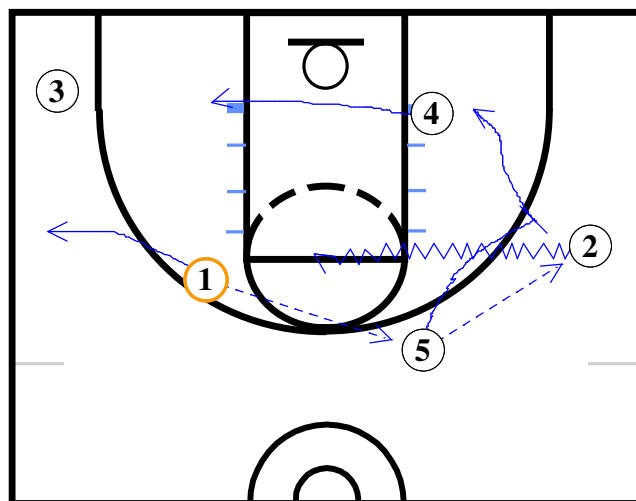
Frame B

1 drives off of 5 for a layup. If X4 helps 1 will pass to 4 for a layup.



Frame C

1 drives off of 5's ball screen. 5 picks and pops after he screens.



Frame D

Here 1 passes to 5 and spaces away. 5 passes to 2 and runs a pick and roll with 2 driving hard to the middle. 4 moves to the other block.

General Comments

These are some things that could happen if you use 5 at the high post position. 4 and 5 must be able to play the high post position. This is a called entry. The coach will signal 5 to get us into this set.