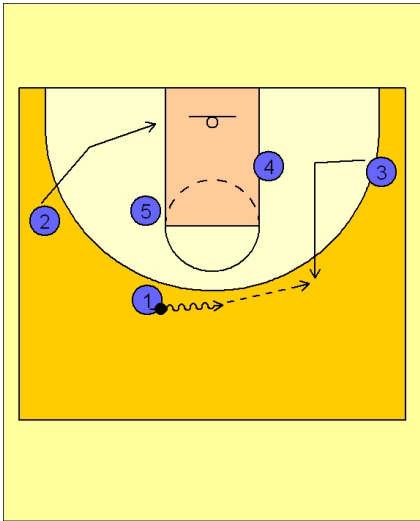




Quick hitter (9)

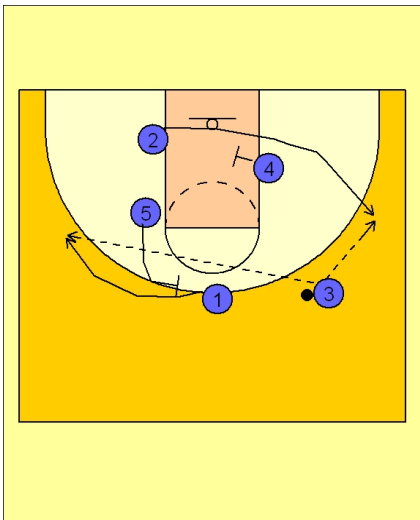


UCONN Quick Hitter vs. Man Defense

#1 starts the play by driving the ball towards the middle of the floor.

#3 on the right wing cuts in and out on top to receive the entry pass from #1.

As this action is taking place, #2 on the left wing slides down to the left low block area.

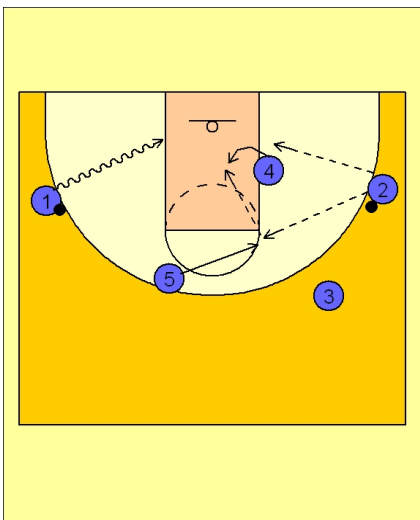


UCONN Quick Hitter vs. Man Defense

As soon as #1 passes to #3, two things will happen together.

#5 will backscreen for #1 and #4 will set a screen for #2 on the right block.

#3 is looking to hit #1 on the back side of the floor with an over the top pass while he is also looking to hit #2 popping out on the right wing for the open shot.



UCONN Quick Hitter vs. Man Defense

You will see this alignment gives you some cleared areas to work.

#1 can catch and look to shoot or attack the basket that has been cleared out by the cutting and screening action on the other side of the floor.

#2 can catch and look to get the ball inside to #4 isolated on the low post. #5 can come towards the ball to assist with the high / low entry pass to #4.